

Edda Lattanzi

Distribution of species of the genus *Rosa* (*Rosaceae*) in Italy

Abstract

Lattanzi, E.: Distribution of species of the genus *Rosa* (*Rosaceae*) in Italy. — *Bocconea* 24: 277-284. 2012. — ISSN 1120-4060.

Specimens of personal collecting and Herbaria exsiccata (AO, APP, CLU, FI, HBBS, HLUC, IS, MSNM, PESA, RO, ROV, TOHP, UTV) were analyzed to update the distribution of the genus *Rosa* in Italy. Some units are new to Piemonte, Lombardia, Veneto, Liguria, Emilia-Romagna, Toscana, Umbria, Marche, Molise, Campania, Puglia, Basilicata, Calabria, Sardegna. *Rosa marginata* Wallr. collected in Piemonte and Liguria in the last century, is nowadays cultivated ex situ in the Rome Botanical Garden. *Rosa abietina* and *R. sicula* were recorded by mistake for Toscana and Puglia respectively. The rarest species: *Rosa stylosa*, *Rosa sherardii* and *Rosa viscosa* are recorded only for Lazio, Piemonte and Calabria respectively. *Exsiccata* of the alpine species *Rosa abietina*, *Rosa uriensis* and *Rosa rhaetica* are preserved in the *Herbaria* of the Natural Museums of Bergamo and Brescia.

Introduction

The aim of this research, based on personal collecting and *Herbaria* specimens (AO, APP, CLU, FI, HBBS, HLUC, IS, MSNM, PESA, RO, ROV, TOHP, UTV), is to update the distribution of the genus *Rosa* in Italy.

Materials and Methods

The taxonomy of the genus *Rosa* in Pignatti (1982), in accordance with Boulenger (1924-1925, 1931-32), overlooked 6 species: *Rosa subcanina* (Christ)Vuk., *R. subcollina* (Christ)Vuk., *R. chavinii* Rapin ex Reut., *R. pseudoscabriuscula* (R.Keller) Henker & G. Schulze, *R. uriensis* Lagger et Puget, *R. rhaetica* Gremli, not quoted or treated as synonyms in his *Flora d'Italia*.

The identification of these *taxa* was made easier by some recent studies on the genus (Timmermann & Müller, 1994; Henker, 2000; Wissemann, 2000), focused on well defined characters (*e.g.* the orifice width: <1mm, =1 mm, >1mm).

In accordance with Klásterský (1968), *R. nitidula* Besser, *R. squarrosa* (A.Rau) Boreau, *R. andegavensis* Bastard, *R. deseglisei* Boreau were considered as autonomous species and not as varieties of *R. canina* L. and *R. corymbifera* Borkh.

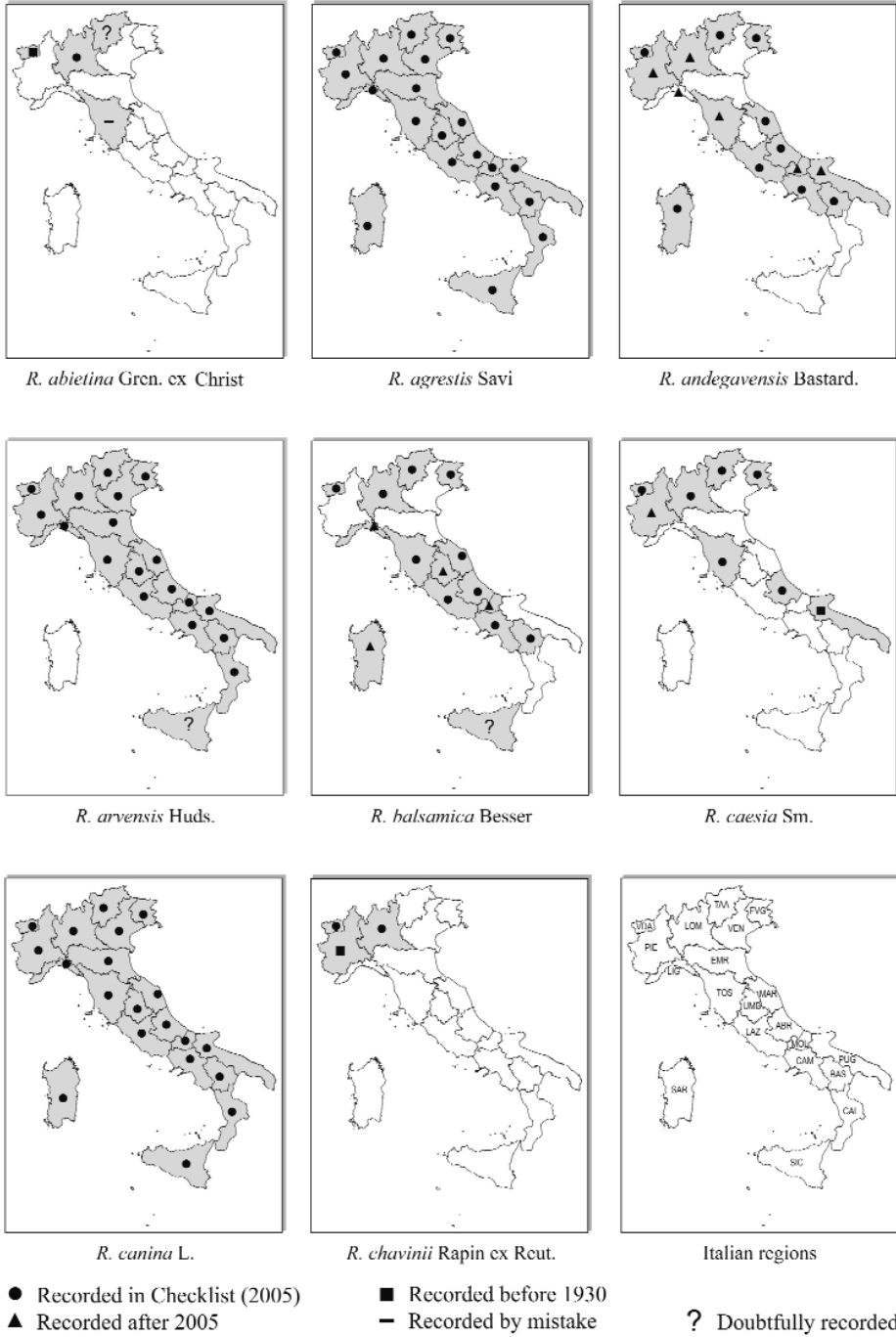


Fig. 1. Italian distribution of wild species of *Rosa*.

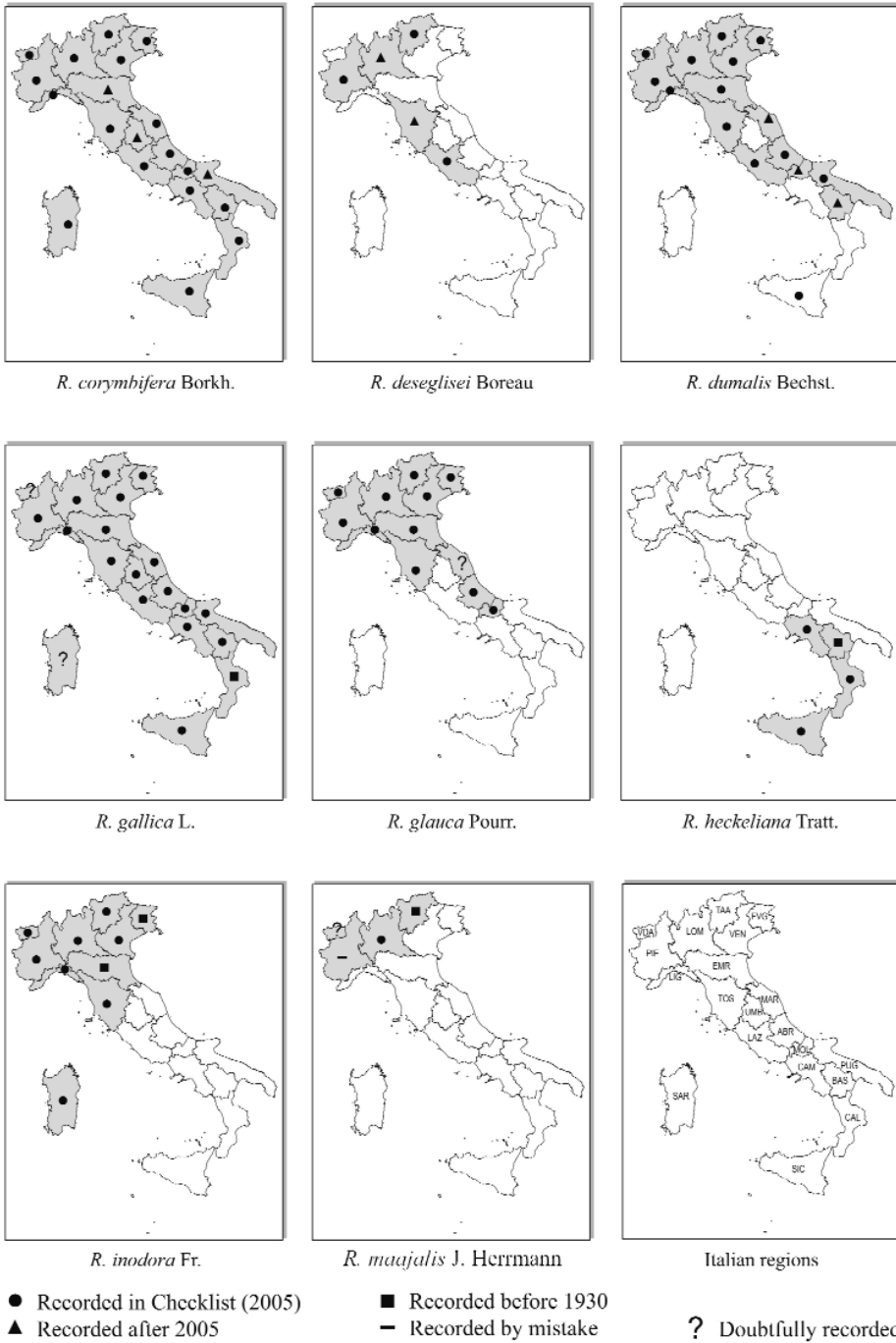


Fig. 2. Italian distribution of wild species of *Rosa*.

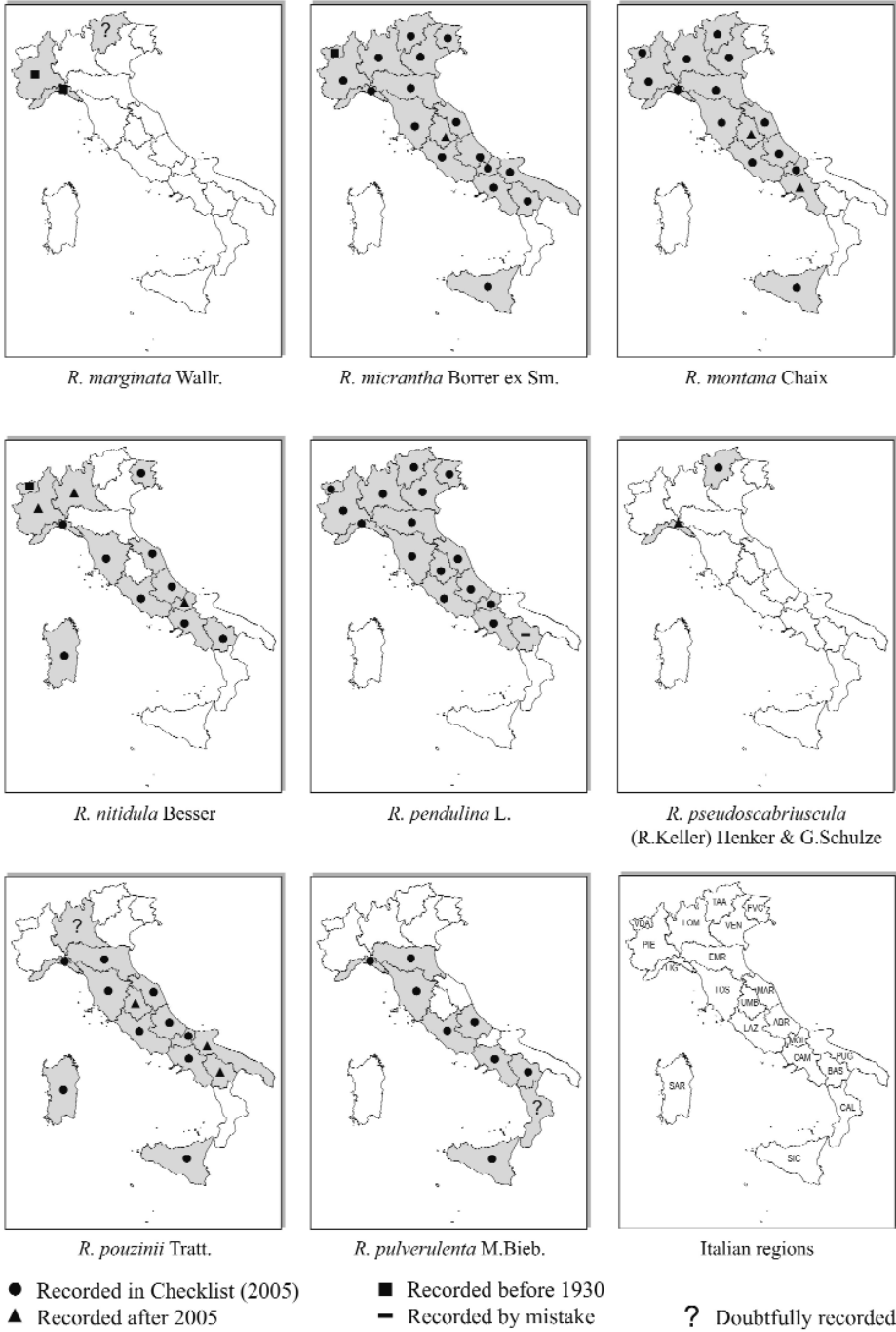


Fig. 3. Italian distribution of wild species of *Rosa*.

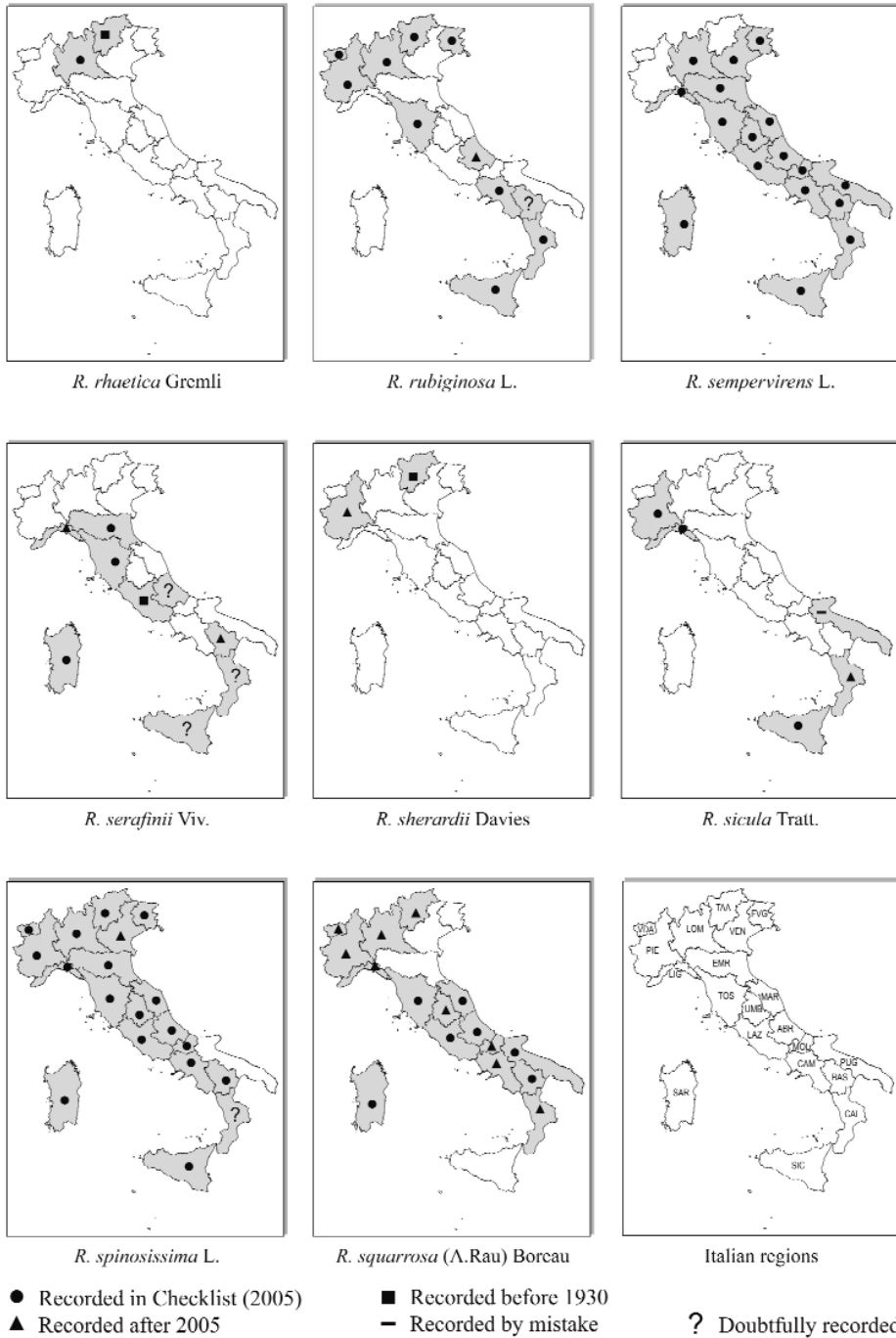


Fig. 4. Italian distribution of wild species of *Rosa*.

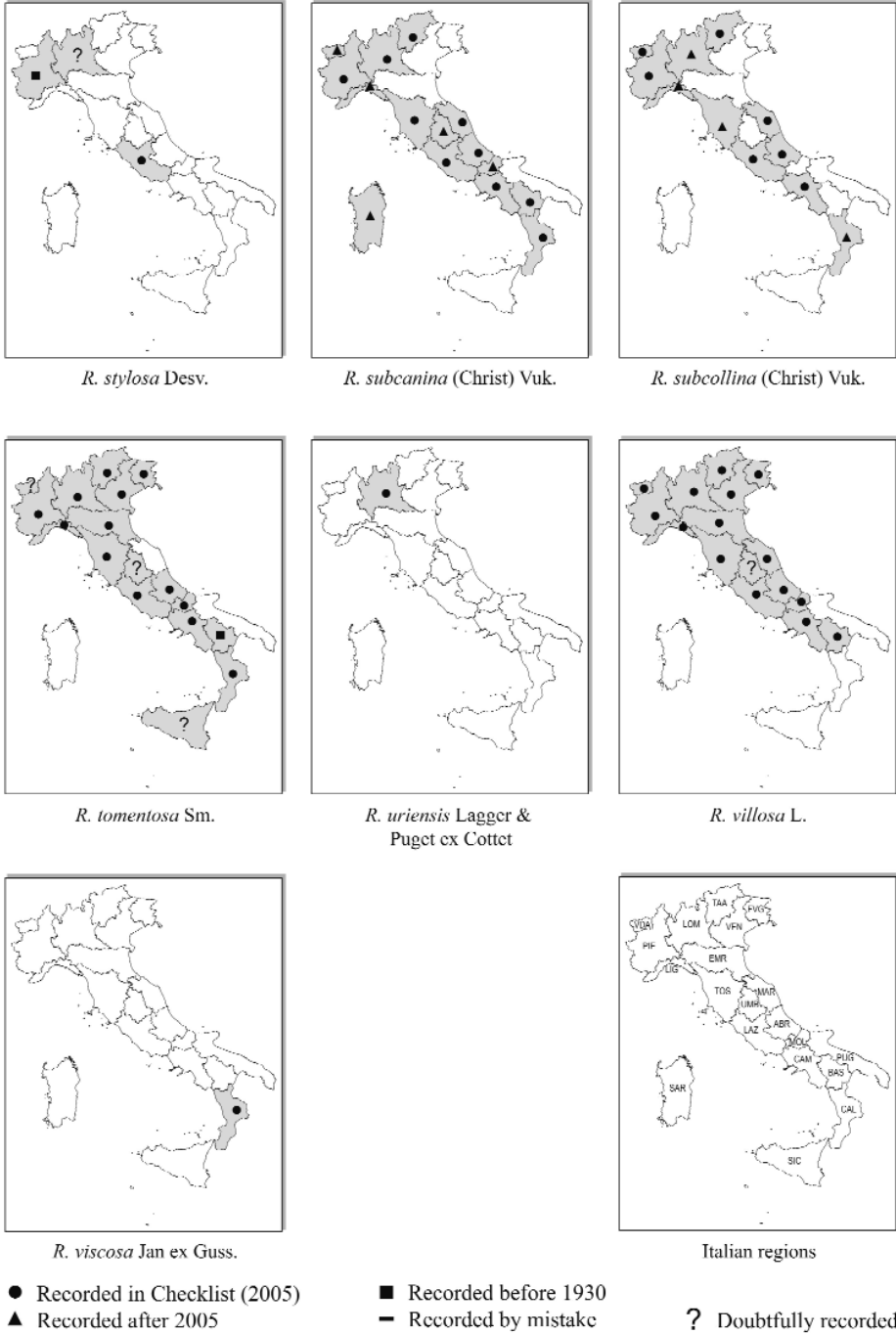


Fig. 5. Italian distribution of wild species of *Rosa*.

Conclusions

Recent researches on *Rosa* in some Italian regions: Trentino-Alto Adige/Südtirol (Mair 2006), Lombardia (unpublished data), Marche (Gubellini & Zitti 2010), Umbria (Pavesi & al. 2007), Lazio (Lattanzi & Tilia 2002; Lattanzi & al. 2003), Molise (Di Marzio & al. 2009), Basilicata (Lattanzi & al. 2006) have increased the knowledge of this taxonomically difficult genus.

The Checklist of the Italian Vascular Flora (Conti & al. 2005) quoted 42 entities of *Rosa* (38 native, 3 non-native, 1 probably hybrid). Actually the native ones are 39 (Figs. 1-5), *R. sherardii* Davies, as a new species for Italy was collected in Piemonte (Soldano & Wissemann 2005).

Some alpine or north-European species quoted for Piemonte (*R. chavinii*) or Trentino (*R. majalis* J. Herrmann) and collected in the last centuries, are not present there nowadays. The rarest species: *R. sherardii* Davies, *R. stylosa* Desv. and *R. viscosa* Jan ex Guss., occur only in Piemonte, Lazio and Calabria, respectively. The *Herbaria* of the Natural Museums of Bergamo and Brescia preserve recent specimens of rare, alpine species: *Rosa abietina* Gren. ex Christ, *R. rhaetica* Gremler, *R. uriensis* Lager & Puget ex Cottet. Unfortunately, *R. marginata* Wallr., from Liguria and Piemonte (1892-1898, ТОHP), exists nowadays only cultivated *ex situ* (Botanical Garden of Rome). *R. agrestis* Savi, *R. canina* L. *sensu stricto* and *R. corymbifera* are the most widely spread species in Italy. *R. arvensis* Huds., occurring in the whole peninsula, is lacking, until now, in the islands of Sicily and Sardinia. *R. heckeliana* Tratt., a rare, east-Mediterranean orophyte, can be found only in the southernmost regions (Campania, Calabria) and Sicily. On the contrary, *R. glauca* Pourr., is frequent in the North and very rare or absent in the South. *R. subcanina* (Christ) Vuk. and *R. subcollina* (Christ) Vuk., discriminated on the base of the orifice width (=1 mm), are probably more frequent than it presently appears. *Rosa strobliana* Burnat & Gremler, considered as a possible hybrid (Kurtto & al. 2004), is not taken into account in this paper.

The non-native Roses, occurring in Italy as casuals (CAS) or naturalized (NAT), as *R. banksiae* W.T.Aiton, *R. foetida* Herrm., *R. microphylla* Roxb., *R. moschata* J. Herrmann, *R. multiflora* Thunb., *R. rugosa* Thunb., *R. virginiana* J. Herrmann are very rare in our territory (Celesti-Grapow & al. 2010).

Acknowledgments

Thanks are due to the Curators of the quoted *Herbaria* and to Giorgio Moretti.

References

- Boulangier, G. A. 1924-25: Les Roses d'Europe de l'Herbier Crépin. – Bull. Jard. Bot. Brux. **10**: 1-147.
 — 1931-32: Les Roses d'Europe de l'Herbier Crépin. – Bull. Jard. Bot. Brux. **12**: 1-542.
 Celesti-Grapow, L., Pretto, F., Carli, E., Blasi, C. (eds.) 2010 : Flora vascolare alloctona e invasiva delle regioni d'Italia – Roma.
 Conti, F., Abbate, G., Alessandrini, A. & Blasi, C. (eds.) 2005: An annotated Checklist of the Italian vascular Flora. – Roma.

- Di Marzio, P., Fortini, P., Giancola, C., Pietrunti, S. & Viscosi, V. 2009: Primi dati sulla distribuzione del genere *Rosa* L. in Molise. – Poster, 104° Congresso Soc. Bot. Ital. 16-19 sett. 2009, Campobasso.
- Gubellini, L. & Zitti, S. 2010: Il genere *Rosa* nelle Marche. – Ann. Bot. (Roma), Quaderni: 95-114.
- Henker, H. 2000: *Rosa*. [In: Hegi, G. (ed.), *Illustrierte Flora von Mitteleuropa*. – Band 4/ 2c: 1-108. Parey Buchverlag, Berlin].
- Klásterský, I. 1968: *Rosa*. – Pp. 25-32 in: Tutin, T.G. & al. (eds.) *Flora Europaea*, 2. – Cambridge.
- Kurto, A., Lampinen, R. & Junikka, L. (eds.) 2004: *Atlas Florae Europaeae*, 13: 39-117. – Helsinki.
- Lattanzi, E., Adamo, M., Fascetti, S. & Di Pietro, R. 2006: Contributo alla conoscenza del genere *Rosa* L. in Basilicata. – Poster, 42° Congresso SIFs, 20-23 giugno 2006, Potenza-Matera.
- , Scoppola, A. & Tilia, A. 2003 : Apport à la connaissance des espèces du genre *Rosa* (*Rosaceae*) dans le Latium (Italie centrale). – *Bocconea* 16(2): 723-730.
- & Tilia, A. 2002: Il genere *Rosa* L. nel Lazio, studio preliminare. – *Inform. Bot. Ital.* 33(2) (2001): 524-528.
- Mair, P. 2006: Die Verbreitung der Wildrosen in Südtirol (Provinz Bozen, Italien). – *Gredleriana* 6: 231-260.
- Pavesi, F., Lattanzi, E. & Di Pietro, R. 2007: Entità del genere *Rosa* L. nuove o confermate per l'Umbria. – *Inform. Bot. Ital.* 39(1): 185- 187.
- Pignatti, S. 1982: *Rosa*. – Pp. 554-566 in: *Flora d'Italia*, 1. – Bologna.
- Soldano, A. & Wissemann, V. 2009: *Rosa sherardii* Davies. – *Riv Piem. St. Nat.* 30: 323.
- Timmermann, G. & Müller, T. 1994: Wildrosen und Weissdorne Mitteleuropas. *Landschafts gerechte Straucher und Bäume*. – Stuttgart.
- Wissemann, V. 2000: Molekulargenetische und morphologisch-anatomische Untersuchungen zur Evolution und Genomzusammensetzung von Wildrosen der Sektion *Caninae* (DC.) Ser. – *Bot. Jahrb. Syst.* 122: 357-429.

Address of the author:

Edda Lattanzi,

Dipartimento di Biologia Ambientale, Sapienza Università di Roma, Piazzale Aldo Moro 5, 00185 Roma. E-mail: eddalattanzi@tiscalinet.it